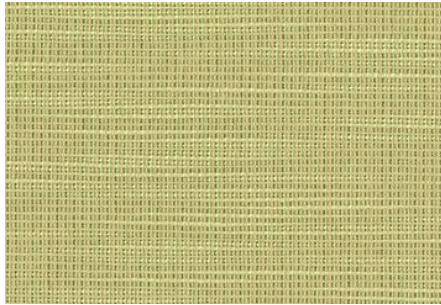


## Pattern Detail and Specifications

Ridgecrest



### Specifications:

content: 100% Polyester  
backing: Synthetic latex blend  
finish: none  
Repeat: n/a  
weight: 12.96 oz. / lin. yd.  
width: 54 inches

### Flammability Passes:

California Tech. Bulletin #117-2013  
UFAC Class 1  
NFPA 260 Class 1

### Performance:

abrasion: Heavy Duty – 100,000 cycles  
(Wyzenbeek – Cotton duck Abradant) (ASTM D4157)  
light fastness: Class 4/40 hrs. min. (AATCC16A)  
color fastness: Class 4 (ASTM D3597, AATCC 8) Wet  
Class 5 (ASTM D3597, AATCC 8) Dry  
physical properties: Class 4 (ASTM D3511) Brush Pill  
80 lbs. warp, 68 lbs. weft (ASTM D4034) Breaking Strength  
84 lbs. warp, 72 lbs. weft (ASTM D4034) Seam Slippage

made in: USA

### Care & Cleanability:

Cleaning code **W** - Spot clean only with water based upholstery shampoo or foam upholstery cleaner. Pretest a small, inconspicuous area before proceeding. Do not over wet. Do not use solvents to spot clean. Cushion covers should not be removed and laundered. When cleaning a spill, blot immediately to remove the spilled material. Evenly clean the entire panel in a seam to seam fashion. Do not clean just the spots or stains. When an overall soiled condition has been reached and professional care is required, contact an IICRC certified firm ([www.iicrc.org](http://www.iicrc.org)).