

CPU/CONTESSA VERONA

Product Specifications

Application

Upholstery

Content

100% CPU - Clean Performance Urethane

Backing

65% Polyester / 35% Cotton

Width

54"

Repeat

N/A

General Characteristics

Abrasion : 200,000+ double rubs (Wyzenbeek)†

Hydrolysis Resistance : 10+ weeks

- ISO1419:1995, Method C, Tropical Test

Colorfastness to light (AATCC-16/200 hours)

Meets or Exceeds all ACT Heavy Duty Performance Guidelines for Upholstery

Flammability

CA Bulletin 117-2013, UFAC/NFPA 260-Class 1

IMO A652 (16) 8.2

Environmental

Solvent/DMF Free, Phthalates Free, FR/Anti-Microbial Additives Free

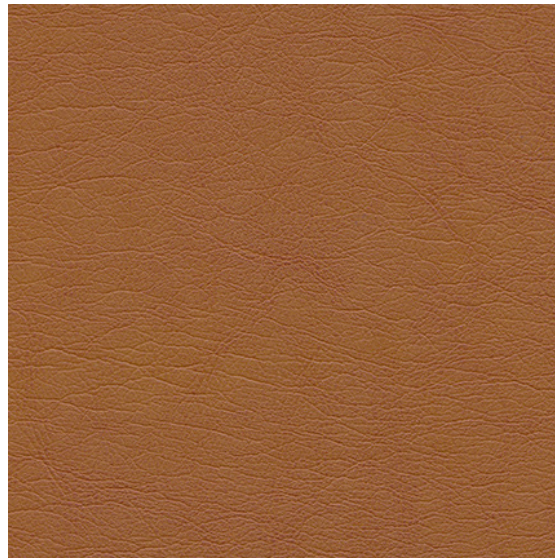
***Complies with REACH, California Section 01350 VOC Emission Standard**

Maintenance

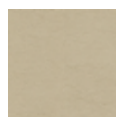
W, Bleach Cleanable (10:1)

Warranty

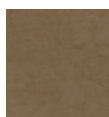
Please refer to our Terms of Sales for warranty information.



Harvest



Chardonnay



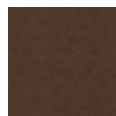
Taupe



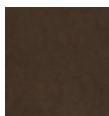
Andora



Straw



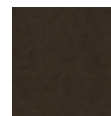
French Toast



Mahogany



Brindle



Fudge



Black

† Multiple factors affect fabric durability and appearance retention, including end-user application and proper maintenance. Wyzenbeek results above 100,000 double rubs have not been shown to be a reliable indicator of increased fabric lifespan.