

### DIMENSIONAL CHATEAUX

#### Product Specifications

---

**Application**

Upholstery

**Content**

Top - 100% Polyurethane (Polycarbonate Based)

Middle – 100% Polyester Nonwoven

**Finish**

Graffiti-Free®

**Backing**

100% Polyester

**Width**

52"

**Repeat**

App. 2.125" H, 2.125" V

**Roll Length**

App. 20yds

**General Characteristics**

Abrasion : 100,000+ double rubs (Wyzenbeek)†

Hydrolysis Resistance : 10+ weeks

- ISO1419:1995, Method C, Tropical Test

Colorfastness to Light (AATCC-16/200 hours)

Meets or exceeds all ACT Heavy Duty Performance Guidelines for Upholstery

**Innovative Dimensional Faux Leather**

Revolutionary padded, ultrasonic sealed process to achieve a three-dimensional look.

**Flammability**

CA Bulletin 117-2013, UFAC/NFPA 260-Class 1

IMO A652 (16) 8.2

**Environmental**

Phthalates Free, FR/Anti-Microbial Additives Free

**Option**

ASTM E-84 F/R Treatment - 200 Yds Min.

**Maintenance\***

Dry Care™, W/S, Bleach Cleanable (4:1)

- Liquid Stains/Spills : Dry Towel, Ink Marks :Eraser

- Dried Wet Stains : Dry Towel + Water

- Water-based (W) or alcohol-based (S) cleaners can be used to clean any remaining stains.

**Warranty**

Please refer to our Terms of Sales for warranty information.



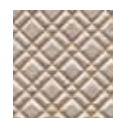
Pewter



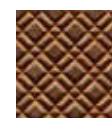
Haze



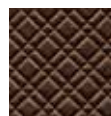
Shell



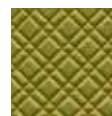
Nickel



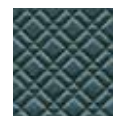
Ethiopia



Cocoa



Spring



Cobalt



Midnight

\*While this product offers excellent protection against ink marks or difficult stains, full removal is not always guaranteed, if stains not addressed promptly.

† Multiple factors affect fabric durability and appearance retention, including end-user application and proper maintenance. Wyzenbeek results above 100,000 double rubs have not been shown to be a reliable indicator of increased fabric lifespan.