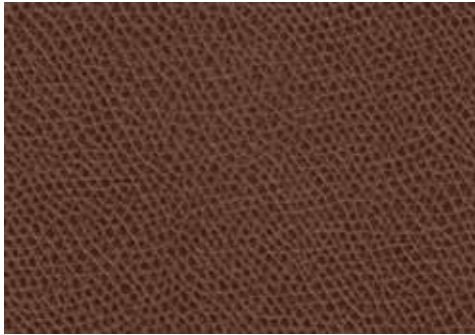


Pattern Detail and Specifications

Rushmore



Specifications:

content: 100% Polyurethane
backing: 70% Polyester; 30% Cotton
finish: Antimicrobial, i-clean
Repeat: n/a
weight: 20.3 oz. per yard
width: 54 inches

Flammability Passes:

California Tech. Bulletin #117-2013
UFAC Class 1
NFPA 260 Class 1

MVSS 302

Performance:

abrasion: Heavy Duty – Exceeds 200,000 cycles
(Wyzenbeek – Wire screen abradant) (ASTM D4157)
light fastness: Class 4/200 hrs. min. (AATCC16A)
color fastness: Class 4 (ASTM D3597, AATCC 8) Wet
Class 4 (ASTM D3597, AATCC 8) Dry
physical properties: Class 4 (ASTM D3511) Brush Pill
98 lbs. warp, 83 lbs. weft (ASTM D5034) Breaking Strength
84 lbs. warp, 85 lbs. weft (ASTM D4034) Seam Slippage
50,000 cycles (CFFA 10) Flex Resistance
Pass (CFFA 6a) Cold Crack
Pass (ISO 1419) 5 weeks
environmental benefits: PVC free
made in: China

Care & Cleanability:

A clean cloth, dampened with the appropriate cleaning solution, should be applied to the affected areas as soon as possible. Blot the fabric with the treated cloth, working from the outer edge of the stained area and moving in toward the center. In order to effectively draw out the stain, renew the cleaning cloth as often as necessary to maintain an absorbent surface.

Clean all stained areas as soon as possible in accordance with the recommended stain removal procedures. Spot clean with upholstery shampoo, foam from a mild detergent, or mild dry cleaning solvent. Hot water extraction or steam cleaning is not a recommended cleaning method. Clean spots or stains from the outside to the middle of the affected area to prevent circling (see Stain Removal Matrix below).

1. Soap and water
2. Difficult stains use Fantastik® or Formula 409®
3. Disinfects with 5:1 water / bleach solution