

## SKINTEX® SF LEVELS

### Product Specifications

---

#### Application

Upholstery

#### Content

100% Polyurethane (Polycarbonate Based)

#### Finish

Graffiti-Free®

#### Backing

100% Reinforced Pollex™

#### Width

54"

#### Repeat

N/A

#### General Characteristics

Abrasion : 200,000+ rubs (ASTM D4157 Wyzenbeek)†

Hydrolysis Resistance : 10+ weeks

- ISO1419:1995, Method C, Tropical Test

Colorfastness to Light (AATCC-16/200 hours)

Meets or exceeds all ACT Heavy Duty Performance Guidelines for Upholstery

#### Flammability

CA Bulletin 117-2013, UFAC/NFPA-260

IMO A652 (16) 8.2

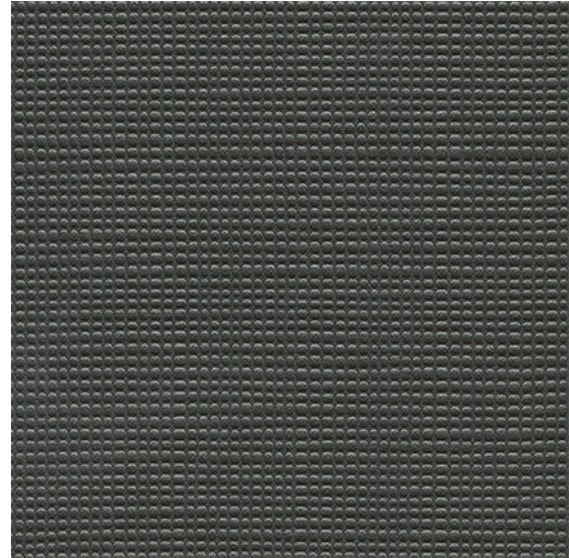
#### Maintenance\*

Dry Care™, W/S, Bleach Cleanable (4:1)

- Liquid Stains/Spills : Dry Towel, Ink Marks :Eraser
- Dried Wet Stains : Dry Towel + Water
- Water-based (W) or alcohol-based (S) cleaners can be used to clean any remaining stains.

#### Warranty

Please refer to our Terms of Sales for warranty information.



#### Twilight



\*While this product offers excellent protection against ink marks or difficult stains, full removal is not always guaranteed, if stains not addressed promptly.

† Multiple factors affect fabric durability and appearance retention, including end-user application and proper maintenance. Wyzenbeek results above 100,000 double rubs have not been shown to be a reliable indicator of increased fabric lifespan.