

### VIRTUAL COLOR SPREE

#### Product Specifications

---

#### Application

Upholstery

#### Content

Top - 100% Silicone, Inherently Graffiti-Free®

Middle - 100% Polyurethane (Polycarbonate Based)

*\*Innovative, Patented Technology to Combine Silicone and Polyurethane*

#### Backing

100% Pollex™

#### Width

53/54"

#### Repeat

App. 2" H, 4" V

#### General Characteristics

Abrasion : 200,000+ double rubs (Wyzenbeek)†

Hydrolysis Resistance : 10+ weeks

- ISO1419:1995, Method C, Tropical Test

Silicone does not support microbiological growth

Colorfastness to light (AATCC-16/200 hours)

Print Retention (ASTM D3389-10) Grade 5

Meets or Exceeds all ACT Heavy Duty Performance Guidelines for Upholstery

#### Flammability

CA Bulletin 117-2013, UFAC/NFPA 260-Class 1

IMO A652 (16) 8.2

#### Environmental

DMF Free, Phthalates Free, FR/Anti-Microbial Additives Free

*\*Human/Nature friendly Silicone Based*

#### Maintenance\*

W, Bleach Cleanable (4:1), Dry Care™

- Liquid Stains/Spills : Dry Towel, Ink Marks :Eraser

- Dried Wet Stains : Dry Towel + Water

- Water based cleaners/bleach dilution can be used to clean any remaining stains.

#### Warranty

Please refer to our Terms of Sales for warranty information.



Zest



Grass



Lagoon



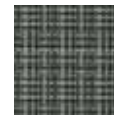
Fawn



Ridge



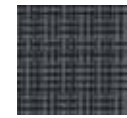
Mahogany



Column



Coast



Cinder

\* While this product offers excellent protection against ink marks or difficult stains, full removal is not always guaranteed, if stains not addressed promptly.

† Multiple factors affect fabric durability and appearance retention, including end-user application and proper maintenance. Wyzenbeek results above 100,000 double rubs have not been shown to be a reliable indicator of increased fabric lifespan.