

VIRTUAL WEBSTER

Product Specifications

Application

Upholstery

Content

Top - 100% Silicone, Inherently Graffiti-Free®

Middle - 100% Polyurethane (Polycarbonate Based)

**Innovative, Patented Technology to Combine Silicone and Polyurethane*

Backing

100% Pollex™

Width

53/54"

Repeat

App. 14" H, 14" V

General Characteristics

Abrasion : 200,000+ double rubs (Wyzenbeek)†

Hydrolysis Resistance : 10+ weeks

- ISO1419:1995, Method C, Tropical Test

Silicone does not support microbiological growth

Colorfastness to light (AATCC-16/200 hours)

Print Retention (ASTM D3389-10) Grade 5

Meets or Exceeds all ACT Heavy Duty Performance Guidelines for Upholstery

Flammability

CA Bulletin 117-2013, UFAC/NFPA 260-Class 1

IMO A652 (16) 8.2

Environmental

DMF Free, Phthalates Free, FR/Anti-Microbial Additives Free

**Human/Nature friendly Silicone Based*

Maintenance*

W, Bleach Cleanable (4:1), Dry Care™

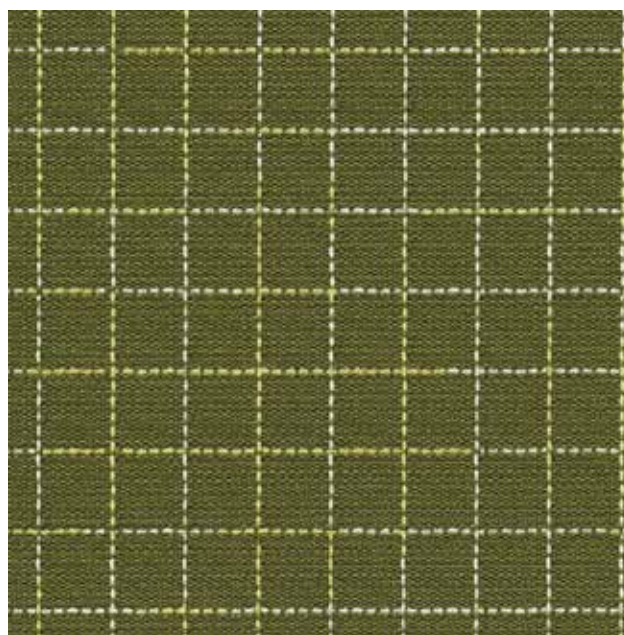
- Liquid Stains/Spills : Dry Towel, Ink Marks :Eraser

- Dried Wet Stains : Dry Towel + Water

- Water based cleaners/bleach dilution can be used to clean any remaining stains.

Warranty

Please refer to our Terms of Sales for warranty information.



Parrot



Fleece



Ginger



Tart



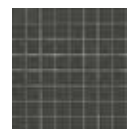
Truffle



Tidepool



Marina



Graphite

* While this product offers excellent protection against ink marks or difficult stains, full removal is not always guaranteed, if stains not addressed promptly.

† Multiple factors affect fabric durability and appearance retention, including end-user application and proper maintenance. Wyzenbeek results above 100,000 double rubs have not been shown to be a reliable indicator of increased fabric lifespan.