

LAYERED™ CROSSINGS

Product Specifications

Application

Upholstery

Content

100% Polyurethane

Finish

Graffiti-Free™

Backing

100% Reinforced Pollex™

Width

54"

Repeat

App. 2-7/16" H, 2-7/16" V

General Characteristics

Abrasion : 100,000+ Double Rubs (Wyzenbeek)†
Hydrolysis Resistance : 10+ weeks
- ISO1419 Tropical Test
Colorfastness to Light (AATCC-16/200 hours)
Meets or exceeds all ACT Heavy Duty Performance Guidelines for Upholstery

Flammability

CA Bulletin 117-2013, UFAC/NFPA 260-Class 1
IMO A652 (16) 8.2

Environmental

DMF Free, PVC/Phthalates Free, PFC Free,
FR/Anti-Microbial Additives Free

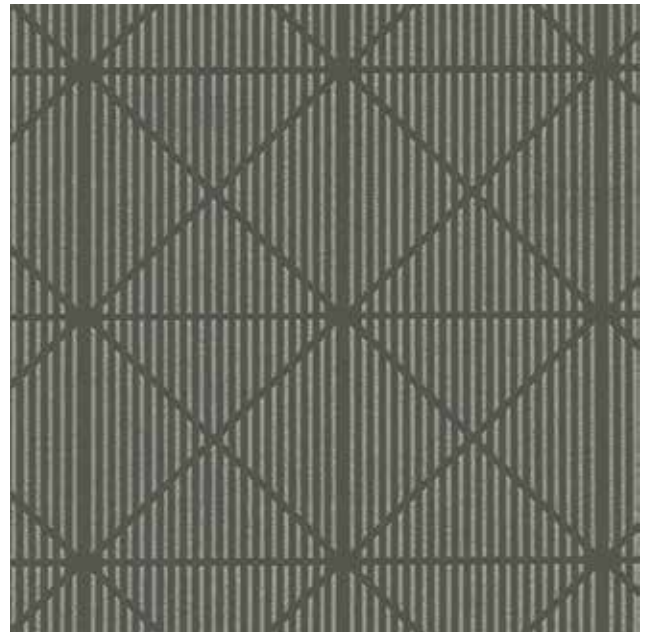
Maintenance*

Dry Care™, W/S, Bleach Cleanable (4:1)

- Liquid Stains/Spills : Dry Towel, Ink Marks :Eraser
- Dried Wet Stains : Dry Towel + Water
- Water-based (W) or alcohol-based (S) cleaners can be used to clean any remaining stains.

Warranty

Please refer to our Terms of Sales for warranty information.



Slate



Chiffon



Pebble



Horizon



Guava



Arabica



Grass



Cadet



Tidal

*While this product offers excellent protection against ink marks or difficult stains, full removal is not always guaranteed, if stains not addressed promptly.

† Multiple factors affect fabric durability and appearance retention, including end-user application and proper maintenance. Wyzenbeek results above 100,000 double rubs have not been shown to be a reliable indicator of increased fabric lifespan.