

BELLEVUE

Product Specifications

Application

Upholstery

Content

88% Polyester, 12% Tekloom® TPE (Graffiti-Free®)

*Patented, High Performance Fused Textile

Width

54"

Repeat

N/A

General Characteristics

Abrasion : Exceeds 1 Million Double Rubs (Wyzenbeek)† Hydrolysis Resistance : 15+ weeks - ISO1419:1995, Method C, Tropical Test

Innovative technology to Combine Textile with the Performance of Coated Fabric

Ink/Stain Resistant, Liquid Barrier, Bleach Cleanable

Meets or Exceeds all ACT Heavy Duty Performance Guidelines for Upholstery

Flammability

CA Bulletin 117-2013, UFAC/NFPA 260-Class 1

IMO A652 (16) 8.2

Environmental

DMF Free, PVC/Phthalates Free, PFC Free, FR/Anti-Microbial Additives Free

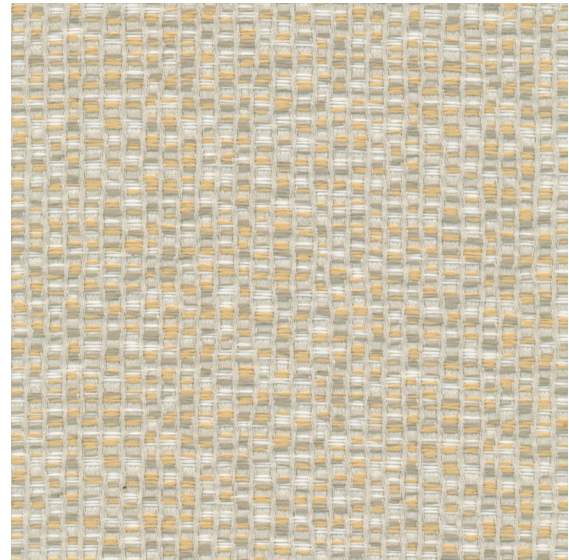
*Complies with REACH, Prop 65, HHI & CAL 01350

Maintenance††

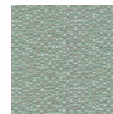
W/S, Bleach (10:1)

Warranty

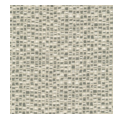
Please refer to our Terms of Sales for warranty information.



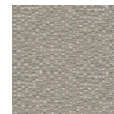
Cornsilk



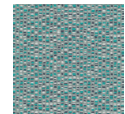
Porcelain



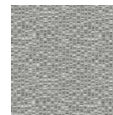
Parch



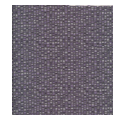
Field



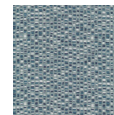
Lagoon



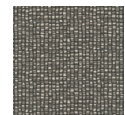
Mineral



Acai



River



Slate

† Multiple factors affect fabric durability and appearance retention, including end-user application and proper maintenance. Wyzenbeek results above 100,000 double rubs have not been shown to be a reliable indicator of increased fabric lifespan.

†† Tekloom protects the woven fabric with a patented clear TPE layer. All approved cleaning chemicals should stay on Tekloom surface. Avoid soaking the seamed area to prevent the cleaning chemicals from entering the base, which might damage the product integrity.