

# Boltaflex®

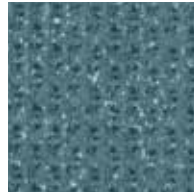
# Villa



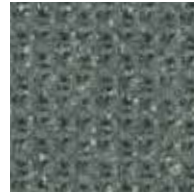
Lapis  
544742



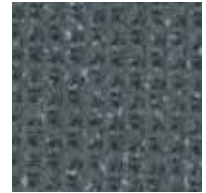
Courtyard  
544745



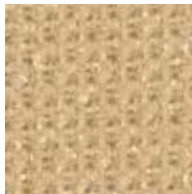
Tahitian Sea  
544740



Succulent  
544737



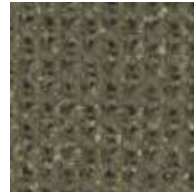
Deep Ocean  
544738



Husk  
544744



Golden Moss  
544733



Arbor  
544735



Green Olive  
544736



Kumquat  
544734



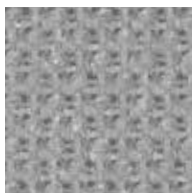
Marmalade  
544732



Pico  
544731



Red Plum  
544730



Luna  
544743



Heather Blue  
544739






Lapis  
544742



Black Sheep  
544741

# Boltaflex®

# Villa

<b>Content</b>	100% PVC face, polyester terry loop knit backing
<b>Features</b>	Eco-preferred construction <ul style="list-style-type: none"> <li>- Phthalate free</li> <li>- Antimicrobial (MR) and flame retardant (FR) free</li> <li>- Complies with Section 101: Lead, and Section 108: Phthalates of the CPSIA and RoHS directive (Updated March 2015)</li> <li>- Formulated without PFAS (Per- and Polyfluoroalkyl Substances) Chemicals</li> </ul>
<b>Finish</b>	<b>PreFixx®</b> protective finish for increased stain resistance and easy cleaning. Bleach cleanable and may be disinfected with a variety of hospital grade disinfectants without discoloring or damaging the finish. Disinfection does not replace the need for regular care and maintenance. For a list of recommended disinfectants, view the Coated Fabrics Chemical Resistance Technical Bulletin located at <a href="https://www.omnova.com/fileadmin/Resource_Center/Coated_Fabrics/Technical_Bulletins/OMN-ChemRes-TB.pdf">https://www.omnova.com/fileadmin/Resource_Center/Coated_Fabrics/Technical_Bulletins/OMN-ChemRes-TB.pdf</a> .
<b>Weight</b>	28 oz/lin. yd [18.7 oz/yd <sup>2</sup> ] / 849 g/lin. m [619 g/m <sup>2</sup> ]
<b>Width</b>	54 in [137 cm]
<b>Repeat</b>	18" wide x 18" high
<b>Performance Requirements</b>	Meets or exceeds: ACT Performance Guidelines   CFFA Healthcare 201 Certified   Ethos™    Also meets or exceeds: <ul style="list-style-type: none"> <li>• CFFA-1a Wyzenbeek - 1.3 million double rubs (cotton duck abradant)</li> <li>• BIFMA, Class A</li> <li>• California Technical Bulletin 117-2013, Section 1</li> <li>• NFPA 260, Class 1</li> <li>• UFAC Fabric, Class 1</li> </ul>
<b>Applications</b>	Indoor <ul style="list-style-type: none"> <li>• Corporate Office • Food Service • Healthcare • Hospitality and Entertainment</li> <li>• Recreational Vehicles • Retail</li> </ul>

*Though our upholsteries can be used in many applications, customers are responsible for selecting an upholstery with attributes that meet the requirements of the specific end-use application – not all upholstery is suitable for all applications.*

*Multiple factors affect fabric durability and appearance retention, including end-user application and proper maintenance. Wyzenbeek results above 100,000 double rubs have not been shown to be a reliable indicator of increased fabric lifespan.*