

**CITYSCAPE**  
 Product Specifications



**Application**  
 Upholstery

**Content**  
 88% Polyester, 12% Tekloom® TPE (Graffiti-Free®)  
 \*Patented, High Performance Fused Textile

**Width**  
 54"

**Repeat**  
 Approx. 7.25" H, 7.25" V

**General Characteristics**  
 Abrasion : Exceeds 1 Million Double Rubs  
 (Wyzenbeek)† Hydrolysis Resistance : 15+ weeks  
 - ISO1419:1995, Method C, Tropical Test

Innovative technology to Combine Textile with the  
 Performance of Coated Fabric

Ink/Stain Resistant, Liquid Barrier, Bleach Cleanable

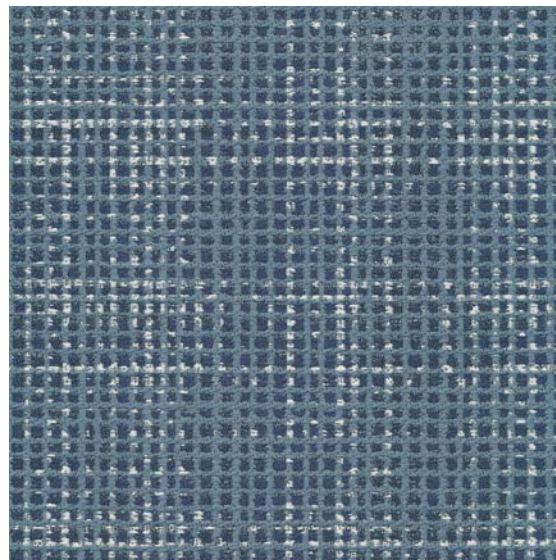
Meets or Exceeds all ACT Heavy Duty Performance  
 Guidelines for Upholstery

**Flammability**  
 CA Bulletin 117-2013, UFAC/NFPA 260-Class 1  
 IMO A652 (16) 8.2

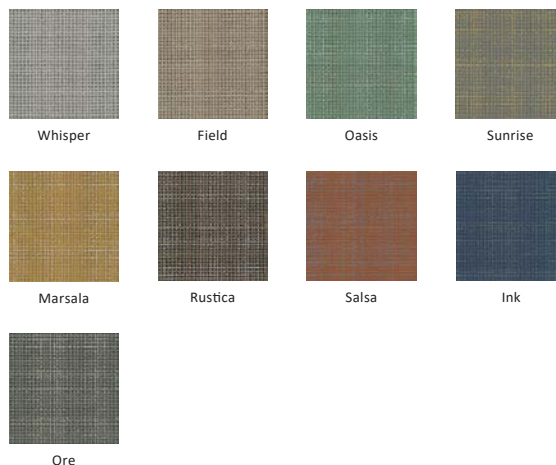
**Environmental**  
 DMF Free, PVC/Phthalates Free, PFC Free, FR/Anti-  
 Microbial Additives Free  
 \*Complies with REACH, Prop 65, HHI & CAL 01350

**Maintenance**††  
 W/S, Bleach (10:1)

**Warranty**  
 Please refer to our Terms of Sales for warranty  
 information.



Lapis



† Multiple factors affect fabric durability and appearance retention, including end-user application and proper maintenance. Wyzenbeek results above 100,000 double rubs have not been shown to be a reliable indicator of increased fabric lifespan.

†† Tekloom protects the woven fabric with a patented clear TPE layer. All approved cleaning chemicals should stay on Tekloom surface. Avoid soaking the seamed area to prevent the cleaning chemicals from entering the base, which might damage the product integrity.