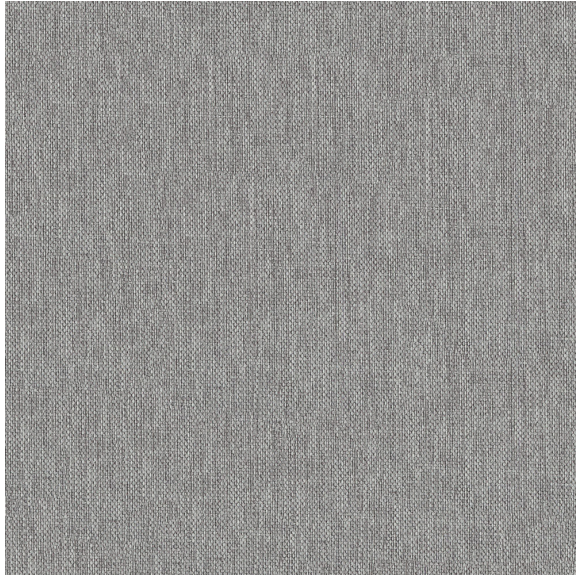


SPECIFICATIONS



Product Description

Endurepel Foundation 905 Wind Chime is finished with Endurepel Shield, easy clean finish. This classic linen look in a light gray color will never go out of style and it has excellent performance in both Hospitality and Residential applications.

Abrasion	100, 000 Double Rubs (Wyzenbeek)
Brand	Endurepel
Construction	Woven Plain
Content Backing	100% Polyester
Content Face	100% Polyester
Crocking	AATCC 8: Dry crocking = Class 5
Fire Retardancy	CALTB117-2013, MVSS302, NFPA 260 Class 1, UFAC Class 1
Number of Colors	Available in 7 colors
Railroaded	Non Railroaded
Roll Size	55 yds (50 m)
Tensile Strength	Passes ASTM D5034 - Weft 195 x Warp 330
Weight	380 gsm, 17.7 oz/yd, 11.2 oz/sq yd
Width	57 in. (145 cm)
Style	Solid
Pilling	ASTM D3511 - Class 5
Social Responsibility	This product is sourced through a socially compliant vendor who has met our sustainability criteria.

SPECIFICATIONS

**Sustainable
Manufacturing**

ISO 14001 Certified,
OEKOTEX Certified

Industry

Contract, Education, Office
Seating, Office
Seating, Residential

Uses

Bedding, Decorative
Accessories,
Hospitality Seating,
Office Seating, Pillows,
Residential Seating