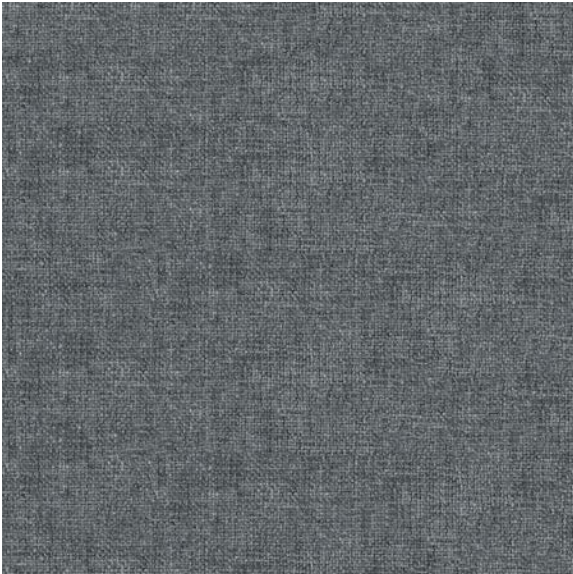


**SPECIFICATIONS**



**Product Description**

Endurepel Fusion 94 Silver is a chenielle tattersall plain featured in our subtle gray color combo. This pattern is treated with our Endurepel Shield easy clean finish.

<b>Abrasion</b>	60, 000 Double Rubs (Wyzenbeek)
<b>Construction</b>	Woven Plain
<b>Content Backing</b>	100% Acrylic Kiss Coat
<b>Content Face</b>	82% Polyester, 18% Rayon
<b>Crocking</b>	AATCC 8: Dry crocking = Class 5
<b>Fire Retardancy</b>	CALTB117-2013
<b>Number of Colors</b>	Available in 4 colors
<b>Railroaded</b>	Railroaded
<b>Roll Size</b>	45 yds (40 m)
<b>Seam Slippage</b>	ASTM D4034 Fill 59 X Warp 95 lb
<b>Weight</b>	480 gsm, 21.3 oz/yd, 14.2 oz/sq yd
<b>Width</b>	56 in. (142 cm)
<b>Style</b>	Solid
<b>Pilling</b>	ASTM D3511 - Class 5
<b>Social Responsibility</b>	This product is sourced through a socially compliant vendor who has met our sustainability criteria.
<b>Sustainable Manufacturing</b>	OEKOTEX Certified

# Endurepel Fusion

ENDURFUSIO94 - 94 Silver

## SPECIFICATIONS

<b>Industry</b>	Residential, Education, Office Seating, Residential, Hospital
<b>Uses</b>	Upholstery