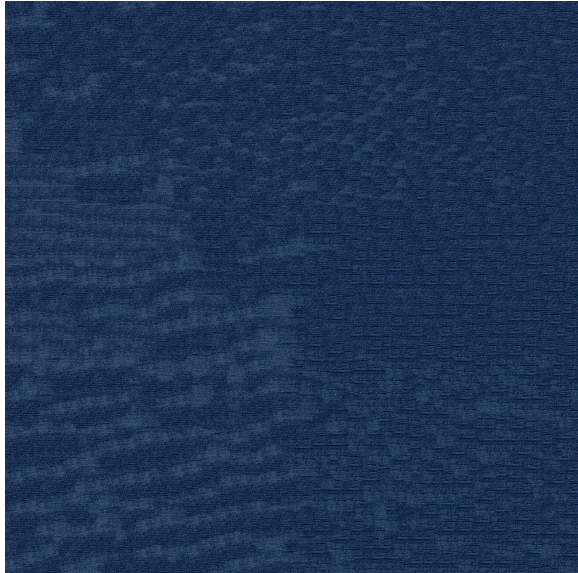


# Endurepel Intrigue

ENDURINTRI308 - 308 Navy

## SPECIFICATIONS



### Product Description

Endurepel Intrigue 308 Navy is a distressed suede like plain with slight jacquard details to hide tracking. Featured in our navy blue coloration. This pattern is treated with our Endurepel Shield easy clean finish.

<b>Abrasion</b>	150, 000 Double Rubs (Wyzenbeek)
<b>Construction</b>	Woven Plain
<b>Content Backing</b>	100% Acrylic Kiss Coat
<b>Content Face</b>	92% Polyester, 8% Nylon
<b>Crocking</b>	AATCC 8: Dry crocking = Class 4
<b>Fire Retardancy</b>	CALTB117-2013, NFPA 260 Class 1
<b>Number of Colors</b>	Available in 7 colors
<b>Railroaded</b>	Railroaded
<b>Roll Size</b>	50 yds (46 m)
<b>Seam Slippage</b>	ASTM D4034 Fill 61 X Warp 96 lb
<b>Weight</b>	465 gsm, 20.9 oz/yd, 13.7 oz/sq yd
<b>Width</b>	54 in. (137 cm)
<b>Style</b>	Solid
<b>Pilling</b>	ASTM D3511 - Class 4
<b>Industry</b>	Contract, Hospitality, Office Seating, Residential, Hospit
<b>Uses</b>	Upholstery