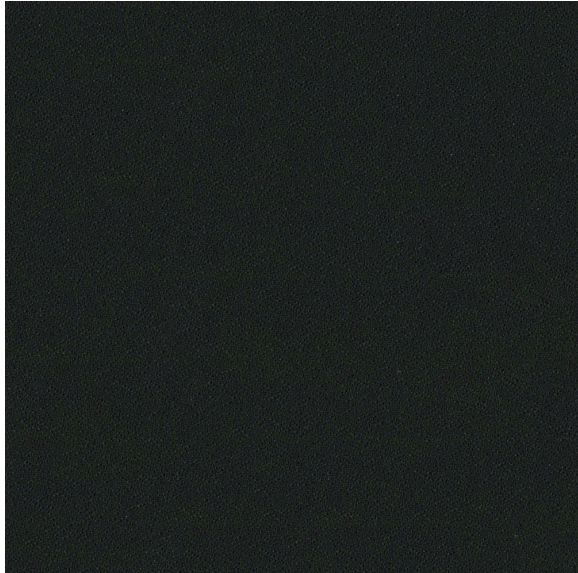


Endurepel Monroe

ENDURMONRO9009 - 9009 Black

SPECIFICATIONS



Product Description

Endurepel Monroe 9009 Black is finished with Endurepel Shield, easy clean finish. This textured, black crepe has a sophisticated look and luxurious soft hand.

Cleaning Code

W - Clean fabrics with water-based cleaning agents or water based foam

Abrasion	165, 000 Double Rubs (Wyzenbeek)
Brand	Endurepel
Construction	Woven Plain
Content Backing	100% Acrylic Kiss Coat
Content Face	100% Polyester
Crocking	AATCC 8: Dry crocking = Class 5
Fire Retardancy	CALTB117-2013, NFPA 260 Class 1, UFAC Class 1
Number of Colors	Available in 12 colors
Railroaded	Non Railroaded
Roll Size	55 yds (50 m)
Seam Slippage	ASTM D4034 Fill 83 X Warp 112 lb
Weight	330 gsm, 15.1 oz/yd, 9.7 oz/sq yd
Width	56 in. (142 cm)
Style	Solid, Texture
Pilling	ASTM D3512 - Class 4
Industry	Contract, Education, Office Seating, Office Seating, Residential

SPECIFICATIONS

Uses

Bedding, Decorative
Accessories,
Hospitality Seating,
Office Seating, Pillows,
Residential Seating
