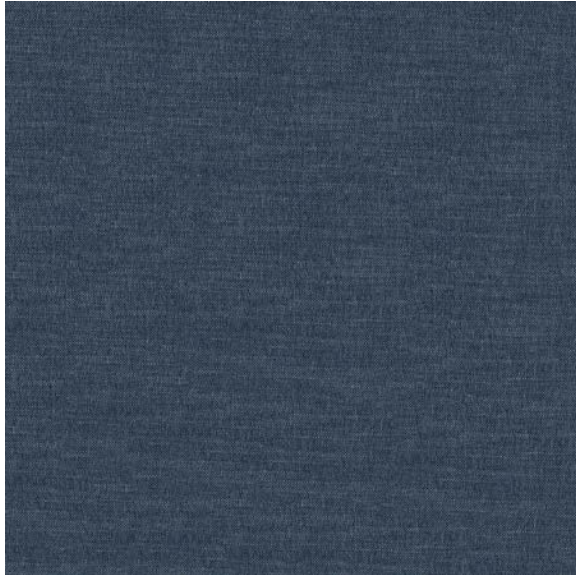


## SPECIFICATIONS



### Product Description

Remy 308 in.digo is a plain that has a two toned denim look shown in our blue color combination.

### Cleaning Code

SW - Clean fabrics with water-based cleaning agents

<b>Abrasion</b>	60, 000 Double Rubs (Wyzenbeek)
<b>After Treatment Finish</b>	Stock unfinished. After treatment available with Endurepel Shield.
<b>Construction</b>	Woven Plain
<b>Content Backing</b>	100% Polyester
<b>Content Face</b>	95% Polyester, 5% Linen
<b>Crocking</b>	CFFA 7 Federal Standard 191A M 5551: Dry crocking = Class 4
<b>Fire Retardancy</b>	CALTB117-2013, NFPA 260 Class 1
<b>Number of Colors</b>	Available in 15 colors
<b>Railroaded</b>	Railroaded
<b>Roll Size</b>	50 yds (46 m)
<b>Seam Slippage</b>	ASTM D4030 Fill 340 X Warp 362 lb
<b>Tensile Strength</b>	Passes ASTM D5034 - Weft 587 x Warp 148
<b>Width</b>	56 in. (142 cm)
<b>Warranty</b>	Full warranty of 2 years
<b>Style</b>	Solid

## SPECIFICATIONS

<b>Proposition 65</b>	This product is Proposition 65 compliant
<b>Industry</b>	Residential, Contract
<b>Uses</b>	Bedding, Decorative Accessories, Hospitality Seating, Pillows, Residential Seating