

**TUMBLEWEED**  
 Product Specifications



**Application**  
 Upholstery

**Content**  
 88% Polyester, 12% Tekloom® TPE  
*\*Patented, High Performance Fused Textile*

**Finish**  
 Graffiti-Free®

**Width**  
 54"

**Repeat**  
 N/A

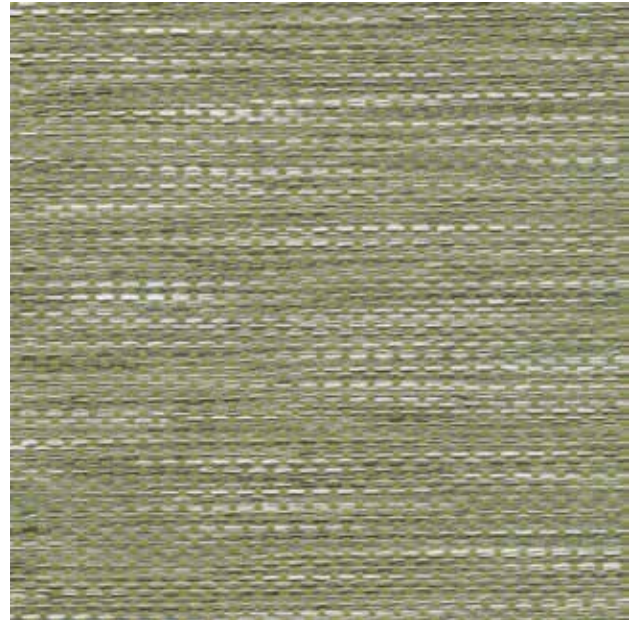
**General Characteristics**  
 Abrasion : Exceeds 1 Million Double Rubs (Wyzenbeek)†  
 Innovative technology to Combine Textile with the Performance of Coated Fabric  
 Ink/Stain Resistant, Liquid Barrier, Bleach Cleanable  
 Meets or Exceeds all ACT Heavy Duty Performance Guidelines for Upholstery

**Flammability**  
 CA Bulletin 117-2013, UFAC/NFPA 260-Class 1  
 IMO A652 (16) 8.2

**Environmental**  
 DMF Free, PVC/Phthalates Free, PFC Free, FR/Anti-Microbial Additives Free  
*\*Complies with REACH, Prop 65, HHI & CAL 01350*

**Maintenance**  
 W/S, Bleach (10:1), Dry Care™

**Warranty**  
 Please refer to our Terms of Sales for warranty information.



GARDEN



† Multiple factors affect fabric durability and appearance retention, including end-user application and proper maintenance. Wyzenbeek results above 100,000 double rubs have not been shown to be a reliable indicator of increased fabric lifespan.