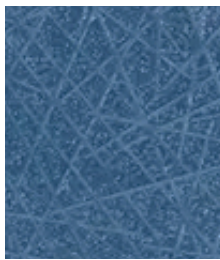
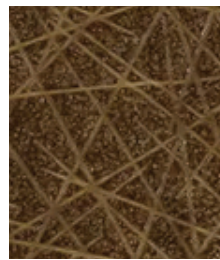




Chiffon



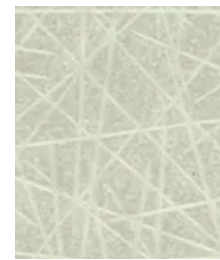
Cornflower



Falcon



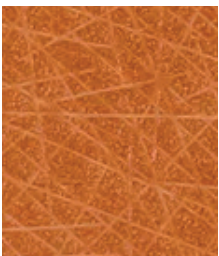
Flax



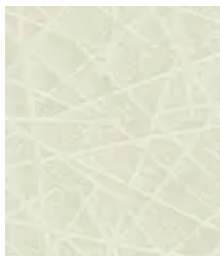
Ghost White



Pepper



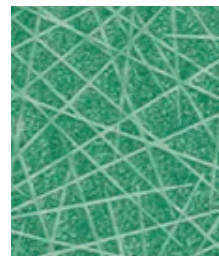
Salmon



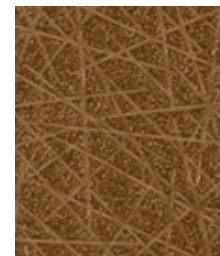
Sea Salt



Sky Blue



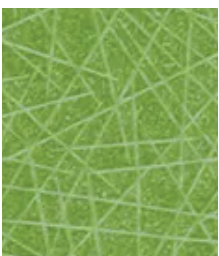
Spring



Umber



White Smoke



Yellow Green

Construction

Surface Composition
 Backing Composition
 Finished Width
 Repeat
 Railroaded
 Put-up
 Cleaning Code

Values

100% Silicone
 100% Polyester
 54" min.
 None
 No
 25 yards
 W/S

Test Method

ASTM D 751-06
 ASTM D 751-06

Performance

Grab Tensile
 Trap Tear
 Seam Strength
 Adhesion
 Stretch @ 15# (MD×CD)
 Flex Resistance
 Blocking
 Crock Resistance
 Wyzenbeek Abrasion
 Colorfastness to Light
 Colorfastness to Water: Sea
 Colorfastness to Water: Chlorinated Pool
 Colorfastness to Perspiration
 Mildew Resistance
 Antibacterial Activity
 Antifungal Activity
 Blue Dye Transfer Resistance
 Biocompatibility - Vitro Cytotoxicity
 Biocompatibility - Irritation and Skin Sensitization
 Chemical Cleaner Resistance
 Cold Crack (Roller Method)

Values

200 lbs./in. × 200 lbs./in. min.
 30 lbs./in. × 30 lbs./in. min.
 90 lbs./in. × 90 lbs./in. min.
 4 lbs./in. × 4 lbs./in. min.
 14% × 25%
 100,000 Cycles
 No. 1 - Pass
 Dry-5; Wet-5
 200,000 cycles, #10 Cotton Duck
 2,000 hours, Grade 4-5
 Shade-5; Staining-5
 4.8
 Acid-4.8; Alkaline-4.8
 Pass
 Pass
 Pass
 Dry-4; Wet-3-4
 Pass
 Pass
 Pass
 -40°F

Test Method

ASTM D 751-06
 ASTM D 751-06
 ASTM D 751-06
 ASTM D 751-06
 ASTM D 751-06
 ASTM D 2097
 FTMS 191A-TM5872
 AATCC 8-2016
 ASTM D 4157-13
 ASTM D 4329-05
 AATCC 106-2013
 AATCC 162
 AATCC 15
 ASTM G-21
 AATCC 147
 AATCC 30, Test III
 LP-463KC-04-03
 ISO 10993-5-2009
 ISO 10993-10-2010
 ANSI BIFMA HCF 8.1-2017 Sections 6 & 7
 CFFA-6a

Flammability

BS 5852 Crib 5 Pass
 California Technical Bulletin 117-2013, Sec. 1 Pass
 FMVSS/CMVSS #302 Pass
 IMO 2010-Part 8 Sec. 3.1 & 3.2 Pass
 NFPA 260 / NFPA 701 Pass
 U.F.A.C. Class I Pass

Environmental

1. No anti-microbial additives
 2. Does not contain PFAS, PFOA
 3. Prop 65 compliant
 4. No chemical flame retardants, CA AB2998 compliant
 5. REACH, RoHS, and LEED compliant

Suitable Applications Contract, Healthcare, Hospitality

Cleaning and Disinfecting

Remove ordinary dirt and smudges with mild soap and water. A 10:1 ratio of water to bleach solution may be used as a disinfectant. Rinse the surface with clean water after disinfecting. Dry with a soft, lint-free cloth or towel. We recommend that you use Clorox Healthcare and Clorox Pro products to disinfect products in commercial settings.